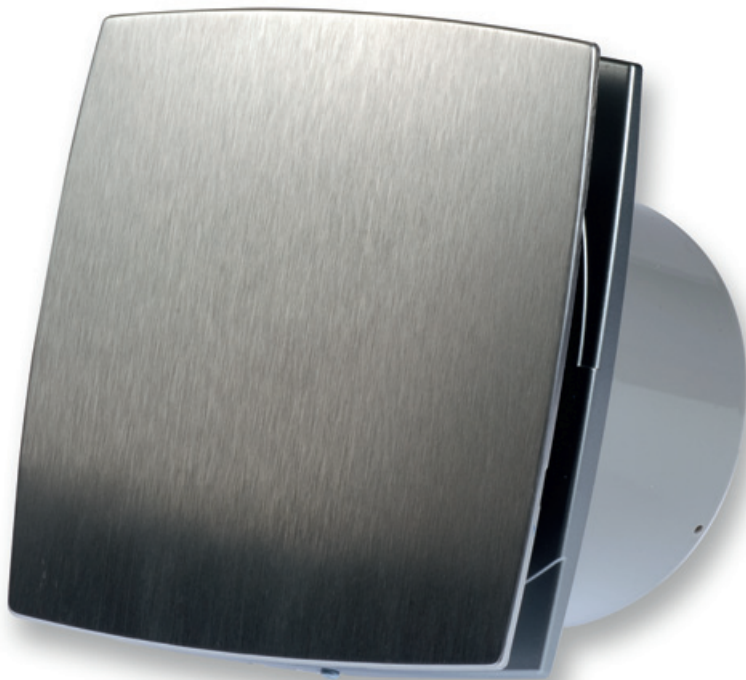


SAF LDA

- Without heat recovery
- Wall or ceiling
- Design Model
- IP34
- 50-250m³/h



Bathroom fans alu type SAF LDA

Alu stylish axial fan

Application

- Axial fan for extract of small and medium rooms
- For wall and ceiling mounting
- **The fans have a limited static pressure available (see diagram)**

Composition

- Body made of ABS
- 7 blade silent impeller
- Supply: 230Vac 1ph
- Protection IP34
- Fastening by means of screws
- Front panel: in polished aluminium

Models

Available in 2 sizes: 100 and 125 mm

- **SAF LDA**: standard type
- **SAF LDAT**: type with timer 2-30 min
- **SAF LDATH**: type with timer 2-30 min and humidity sensor 50-90% RH

Order example

SAF 125 LDATH

SAF LD= type of fan

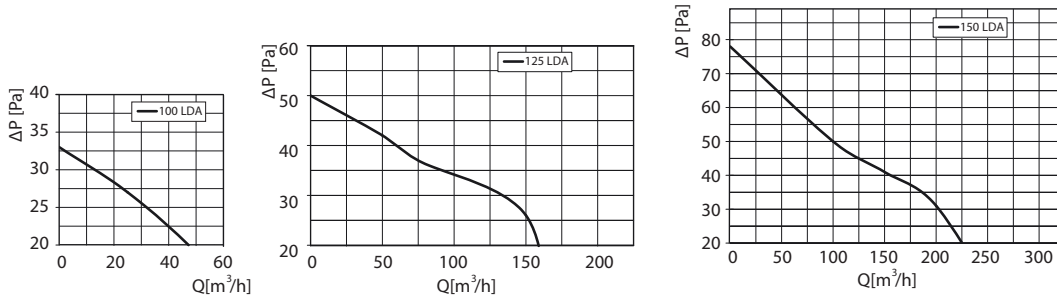
125= diameter

A= polished aluminium front panel

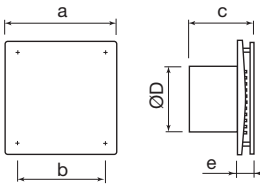
T= timer

H= humidistat

Selection curves



Technical data				
	Q [m³/h]	P [W]	n [rpm]	Lpa @3m [dB(A)]
SAF 100 LDA	48 @ 20Pa	14	2300	33
SAF 125 LDA	157 @ 20Pa	16	2400	34
SAF 150 LDA*	225 @ 20Pa	24	2400	37



Dimensions						
	a [mm]	b [mm]	c [mm]	ØD [mm]	e [mm]	[kg]
SAF 100 LDA	150	108	126	100	30	0.60
SAF 125 LDA	176	113	132	125	32	0.74
SAF 150 LDA*	205	165	153	150	36	0.96

* No longer available